

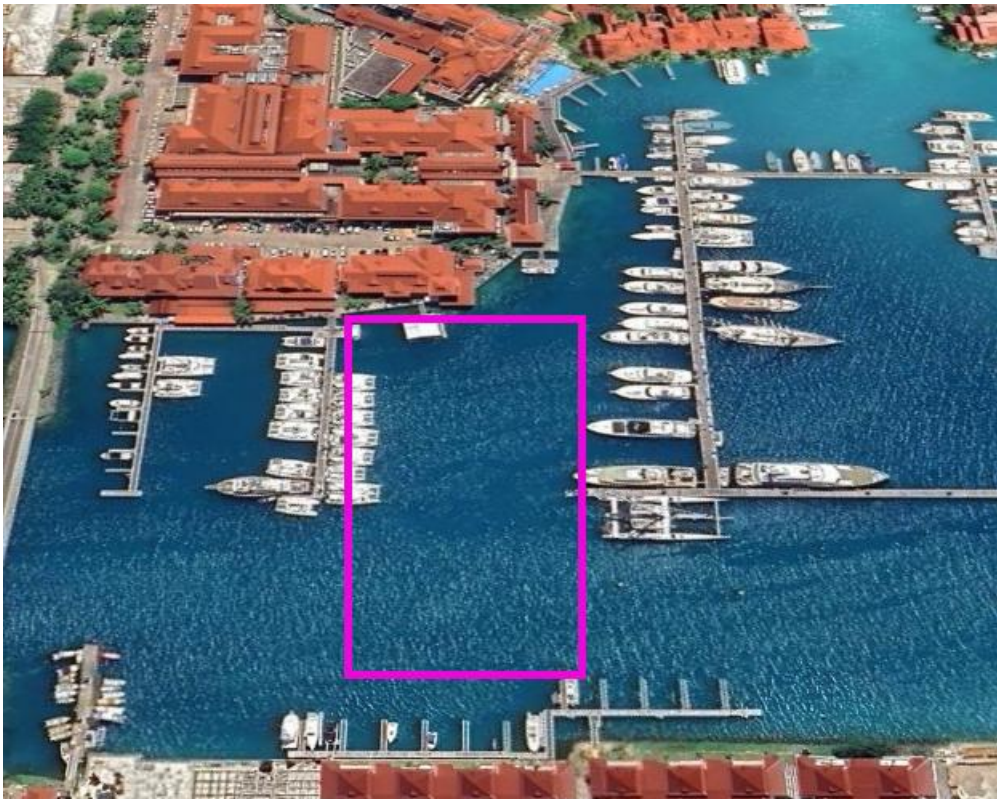
National Bottom Line Fishing Competition

at The boardwalk

18th April 2026

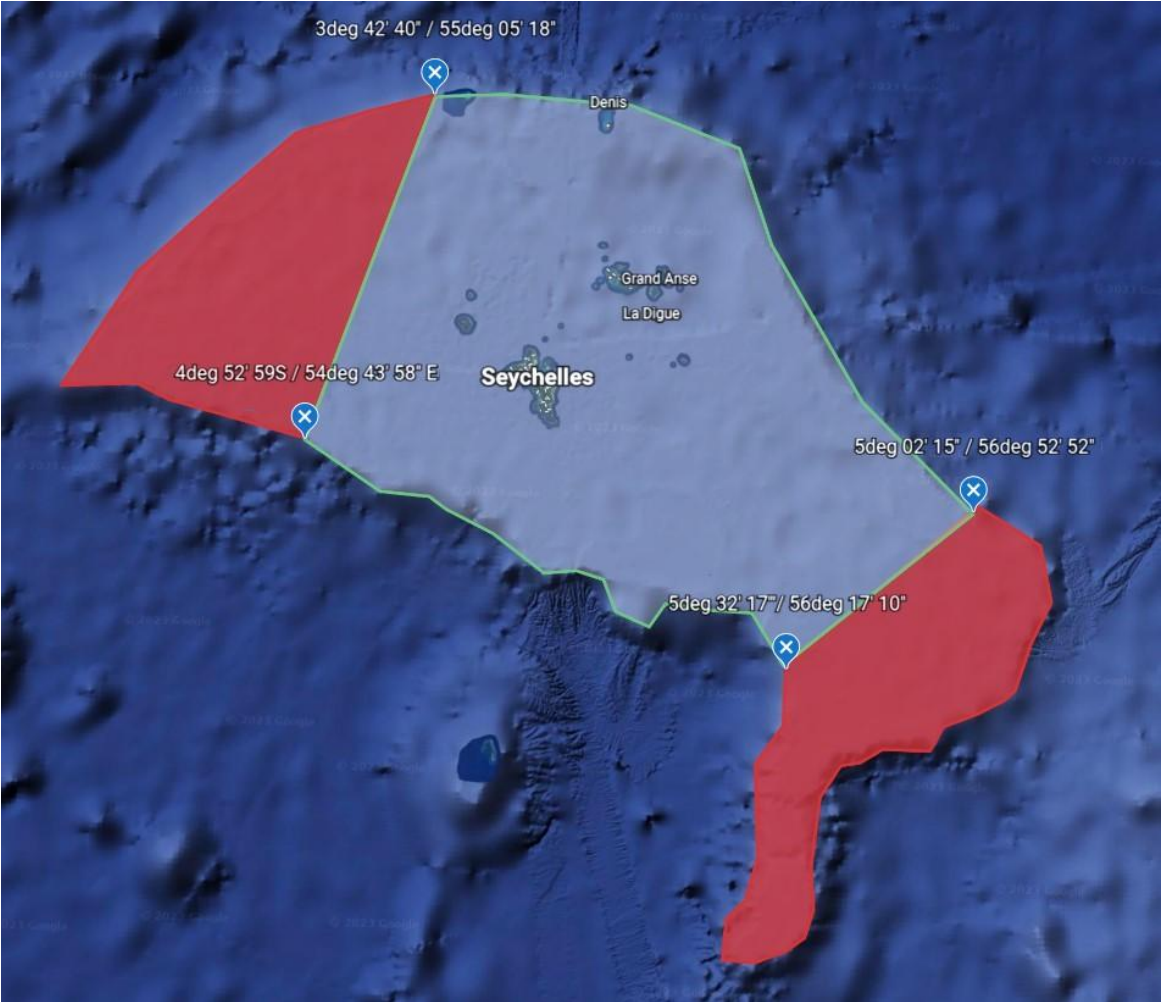
RULES & REGISTRATION FORM

1. **STYLE** – This is a bottom fishing only Tournament. Popping, trolling, Bottom rigs, jigging and hand lines only. Maximum of 5 single hooks permitted per line. Electric reels are strictly not permitted.
2. **ANGLERS** - A team must consist of a minimum of 2 anglers onboard.
3. **STARTING TIME** - Departure time is 2:00 A.M. on Saturday, 18th April 2026 from any location on Mahe.
4. **ENDING TIME** – Team must be in the designated zone at Eden Island Marina at 4.00 P.M GPS time. on Saturday, 18th April 2026.
Teams will be disqualified if they are not within the zone by this time.



- 5. SKIPPERS' MEETING - A skippers/team meeting will be held at The Boardwalk Eden Island Marina from 4pm to 6pm on Wednesday 15th April 2026. All teams must be represented by at least 1 team member. All registration fees must be paid at the time of registration. Credit will not be accepted.**
- 6. REGISTRATION DEADLINE - The deadline for registration is 6:00 P.M on Wednesday 15th April 2026**
- 7. REGISTRATION FEE - The entrance fee is SR 500 CASH ONLY. No refund will be issued once a team has registered. However, a team may switch to another boat prior to the registration deadline.**
- 8. PRIZE-GIVING– The prize-giving will be held at Eden Island Marina immediately after the weigh-in once the results have been calculated.**
- 9. INSPECTION OF BOATS - A member of the Tournament Committee/Officials has the right to board any boat for inspection prior to departure. The boat will be automatically disqualified if fish other than bait is found onboard. The organising committee reserves the right to board any boat at weigh-in and inspect the equipment used. Team members may be asked to submit written accounts of the catch or submit to questioning by the Weighmaster. Failure to allow an inspection to be carried out or a refusal to answer questions will result in automatic disqualification.**
- 10. EMERGENCY INFORMATION AND DEPARTURE VIDEO – For security purposes, each team must send a video recording of whos onboard on boat and video proof of the shore before departure. Approx Fishing location must also be stated.**

11. DESIGNATED FISHING GRID: All teams are required to fish within the following grid +10 nm off the dropoff and shall not enter the red zones on the grid. Tracks must recorded for the duration of the tournament and may be inspected by tournament officials at any time. Tracks found not within the grid will be immediately disqualified.



12. PENALTY - A boat will be disqualified prior to the start of the tournament if it does not have a representative at the Skipper's Meeting.

- a. A boat will be disqualified if during the tournament, it receives fuel from another vessel or refuels from a source other than regular fuel depots on Mahe;
- b. A boat must catch, store and return to the weighing station with fish caught by the team members on that boat only, and during the tournament only. A boat will be disqualified if it weighs in fish from any other source, or if it weighs fish caught prior to the start of the tournament;
- c. A boat will be disqualified if a non-registered person other than pre-approved members of the media joins the boat or is discovered on the boat during the tournament;
- d. A boat will be disqualified if a team member joins the boat after the tournament has started. Note that all members of a team must be onboard when the boat departs and the same team members must be onboard when the boat returns to the weigh-in station;
- e. A boat will be disqualified if a team member disembarks from the boat during the tournament and then rejoins the boat from a different location;
- f. A boat will be disqualified if a team member disembarks from the boat during the tournament. The only exception is when during the tournament, a boat informs the Tournament Organizer that it is offloading a sick or injured team member (or members), or offloading a team member due to an emergency situation. In such cases, the boat will be allowed to continue participating in the tournament without being disqualified;
- g. A boat will be disqualified if it does not return to the weigh station under its own power;
- h. A boat that is disqualified will not be eligible for prizes.
- i. The use of foul language towards the weigh-in team or rules officials by the team or the team's associates will result in immediate disqualification.
- j. Mutilated fish will not be accepted and will not be eligible for any prizes

- 13. WEIGH-IN - Weigh-in shall commence at 2:00 P.M. Saturday, 18th April 2026 at Eden Island Marina . Boats must leave the weigh station pontoon as quickly as possible after the weigh-in to make room for others.**
- 14. WEIGH-IN AREA - Only the Team whose catch is being currently weighed will be allowed into the designated weighing area. The Team Captain will sign the prescribed form after the weighing is completed and receive a copy signifying his agreement thereto. No results will be issued during the weigh-in process.**
- 15. FISH – ONLY 2 fish of each category weighed. Participants must bring their fish to the designated weigh station. Participants are allowed to keep their catch. Please ensure that fish are not left at the weigh station or in the Marina.**
- 16. PROTESTS – Any protests must be lodged by the registered team captain in writing only to Weighmaster 1 hour after the last boat has weighed in. The protest must be accompanied by a deposit of SR 2,500 CASH ONLY. The Weighmaster will consult with the tournament officials and their decision will be final and only announced at the prize-giving ceremony.**
- 17. MINIMUM WEIGHT AND SIZE – Bourzwa and zob gri is regulated by SFA, Teams must be aware of these laws.**
- 18. WINNER - The winning team will be determined based on the team with the most amount of points and runner up with the second highest amount of points.**

19. TOURNAMENT RANKING

(TOURNAMENT WINNER) & TOURNAMENT RUNNER-UP The Tournament Winner (Best Team) and Runner-Up will be determined on a point-base system to be calculated as follows: Points will be awarded according to the TABLE OF WEIGH-IN for heaviest & second-heaviest fish in each category, **ONLY 2 OF EACH SPECIES WILL BE WEIGHED.**

A team will be awarded the points for both 1st and 2nd if the TABLE OF WEIGH-IN allows 2 fish to be weighed and if they have caught the 2 heaviest fish in that category

If two or more teams are tied with the same number of points at the end of the tournament, the team with the most first place finishes will win the tiebreaker. If there is a further tie due to the same number of first place finishes, then the team with the Best Total Overall Catch (meaning total weight of fish weighed) shall win the tiebreaker.

Species	Points for Heaviest	Points for 2nd Heaviest	Prize
Bourzwa	5	3	Trophy
Bordmar	5	3	Trophy
Etelis	5	3	Trophy
Makonde	5	3	Trophy
Msye Angar	5	3	Trophy
Vyey Plat	5	3	Trophy
Vyey Bordaz	5	3	Trophy
Job Gri	5	3	Trophy
Zob Zonn	5	3	Trophy
Saumon	5	3	Trophy

20. WINNING PRIZES

TOURNAMENT WINNER: The team with the most points declared winner and will be awarded a cash prize

TOURNAMENT RUNNER UP:

The team with the second most points declared Runner up will be awarded a cash prize

REGISTRATION FORM

Tournament Details

Tournament Name: National Bottom Line Fishing Competition

Date and Time: 18th April 2026. 2am to 4pm

Location: Mahe – Eden Island

Participant Details

Team / Boat Name: _____

Captain Name: _____

Contact Number: _____

Email Address: _____

Angler(s) Name(s):

1. _____

6. _____

2. _____

7. _____

3. _____

8. _____

4. _____

9. _____

5. _____

10. _____

REGISTRATION FEE

Rs 500 per boat CASH ONLY

PRIZE-GIVING

Eden Island Marina – Saturday 18th April 2025

We have read and fully understand the rules governing our participation in this competition and agree to abide by them. In the event of a matter arising that is not covered by the rules, we accept that “fair play” shall apply and that the subsequent decision of the tournament officials shall be final.

All boats registered do so at their own risk. By registering as an angler in the tournament, the angler holds harmless the Tournament Committee, Tournament Judges, Organizers, Sponsors and all persons connected directly or indirectly with the operation of the Tournament from any liability for libel, slander, loss, damage, negligence, harm, injury, or death suffered by any participant, entrant, sports fisherman, their companions, boat captains, crew members, family, vessels and equipment which occur during or in conjunction with the Tournament.

TEAMCAPTAIN

TOURNAMENT OFFICIAL

